



What's New at Imaging Center for Animals

1515 Busch Parkway, Buffalo Grove, IL 60089
Phone: 847-459-7535 Fax: 847-520-4084

**ICA offers Imaging Services 5 days a week from
8:00AM to 5:00PM.**

The Team at **ICA** brings you information and updates about different imaging studies in veterinary medicine.

MRI

Magnetic Resonance Imaging (MRI) provides information that differs from other imaging modalities.

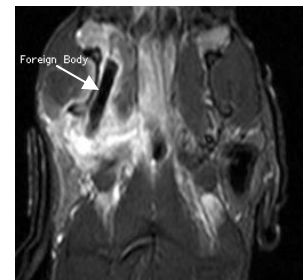
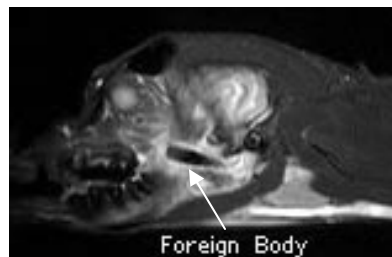
It uses a large magnet, radiowaves and a computer to generate images of the region of interest. Radio signals given off by the body are digitally processed to create the images. Therefore the signal intensity noted on the scans is a reflection of subtle discrimination among tissues using their biochemical and biophysical properties. Beam hardening artifacts as seen with CT are avoided. As a result, MRI provides excellent contrast and soft-tissue resolution, allowing differentiation between types of fluid and soft tissue and allows multiplanar capability (tri-dimensional representation) without moving the patient.

Depending upon the disease process, the technologist chooses different sequences/parameters that will provide differentiation of abnormal (diseased) tissue from normal tissues significantly easier than other imaging modalities such as CT, radiography and sonography. Motion artifacts (physiological (cardiac, respiratory, vascular, gastro-intestinal (peristalsis)) or voluntary motion) is more pronounced in MRI than in CT and can cause significant image degradation. Although different computerized compensation techniques can be used to minimize these artifacts, MRI requires that the animal be anesthetized but there is absence of ionizing radiation risk when compared to other imaging techniques.

MRI examinations can be done on an outpatient basis. Anatomical localization must first be determined, as whole body scan CANNOT be done.

Although MRI is well-known for its diagnostic value for neurologic disease (brain tumors, disc herniation, inner ear disease), following are some other applications where this modality allows superior visualization and early diagnosis compared to computed tomography or radiography.

Case 1: Foreign Body (well-defined structure of low-signal (piece of wood)), surrounded by a lesion of high signal (inflammation).



ICA STAFF

Renée Léveillé,
DVM, DACVR, Radiologist

Elisabeth Girard
DVM, Radiologist

Jennifer Woods, CVT
Manager/Head Tech

Adrienne Allen

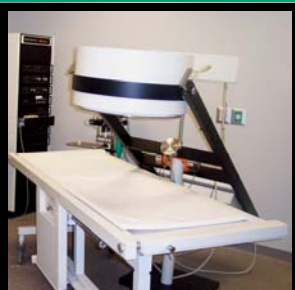
Lauren Calandra

Jolene Ebel, CVT

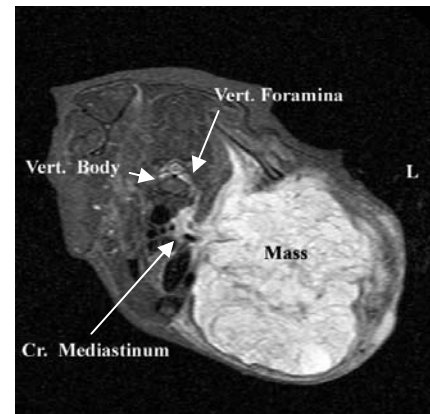
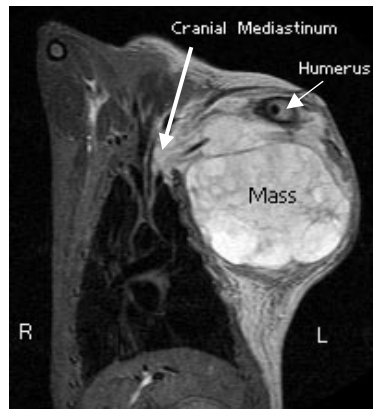
Sara Jendro

Kristy Mroska
RT (R), MR, ARRT

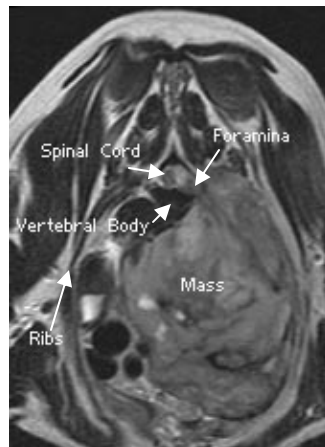
Heather Coughlin
Coordinator



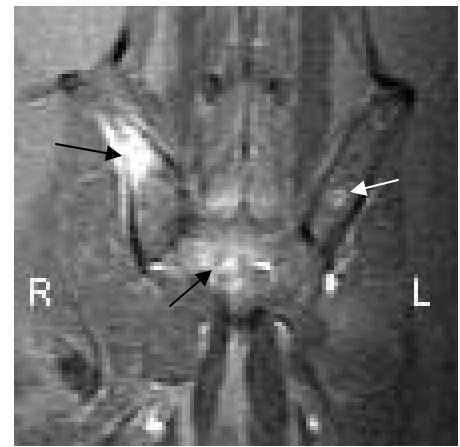
Case 2: Axillary mass (high-signal) invading the cranial mediastinum and left vertebral foramina.



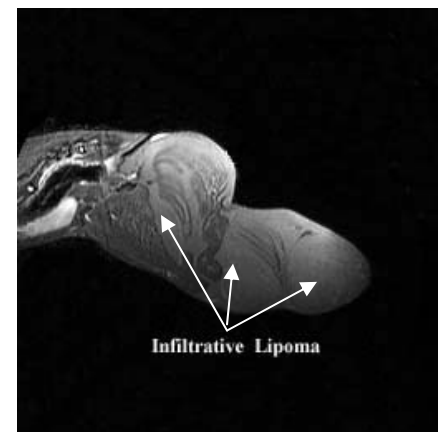
Case 3: Intrathoracic Mass invading the spinal canal.



Case 4: Bone metastases at the level of the pelvis (black and white arrows).



Case 5: Infiltrative Lipoma right hind leg (high-signal).



Contact us for more information and to discuss different imaging procedures and studies for your patients.

We appreciate your referrals and confidence in our services.

We're on the web
www.vetspecialty.com