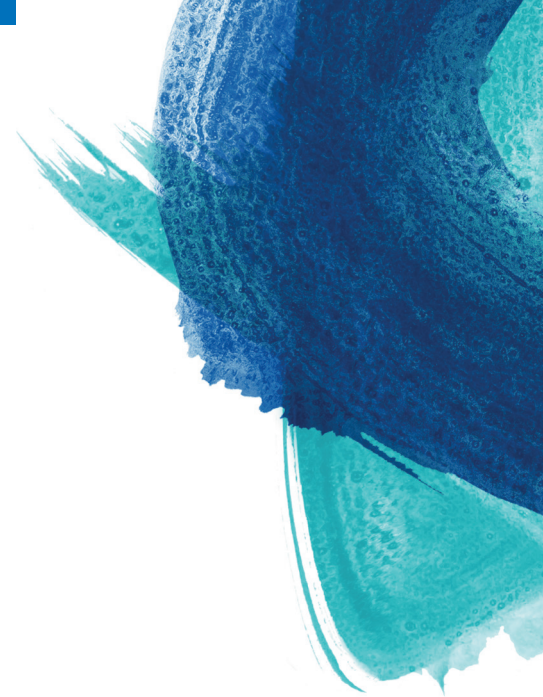




**FRESENIUS  
KABI**

caring for life



## Donor Tube Stripper

For stripping undiluted blood from donor tubing into blood collection container.

Ergonomic design

---

Constructed of machined aluminum

---

Durable electroless nickel coating with satin finish

---

Teflon® rollers

---

# Donor Tube Stripper

The Fresenius Kabi Donor Tube Stripper is crafted with durable, lightweight machined aluminum. The Teflon rollers are supported with reinforced pins for reliable performance.

The Donor Tube Stripper includes a 2mm hex key and 0.9mm gap gauge for adjusting the roller gap.



Description	Product Code	Weight	Closed Dimensions
Donor Tube Stripper	6R4452	0.5 lb (227 grams)	6.75" L x 1.75" W x 1" H (17.1 cm x 4.5 cm x 2.5 cm)

For more information please contact us at [ProductSupport@fresenius-kabi.com](mailto:ProductSupport@fresenius-kabi.com) or 800-937-5060.

Refer to the Instructions for Use for a complete list of warnings and precautions associated with the use of this product.

Trademarks referred to are property of their respective owners.  
Copyright © 2020 Fresenius Kabi AG. All rights reserved.



**FRESENIUS  
KABI**

caring for life



## **Hematype**<sup>®</sup> Segment Device

The Hematype Segment Device supports safe handling of blood bag tubing segments.

Hematype is a reliable alternative to scissors when accessing blood-filled tubing for sampling.

Easy-to-use

---

Designed to reduce sharps injuries

---

Reduces risk of blood spills and splatters

---

# Hematype Segment Device

## Hematype protects technicians and the integrity of samples

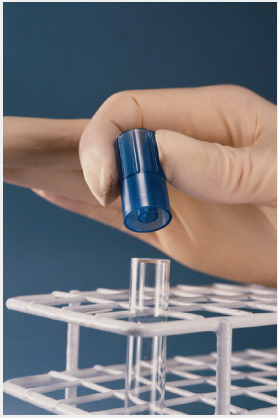


The top of the Hematype has a tapered opening for placing a standard size blood tube segment. The Hematype base is placed over a vial to direct the sample flow.

The needle within the Hematype chamber accesses the tubing contents, while protecting the operator's fingers from injury. Splattering is reduced since the opened tubing is contained within the chamber.

Hematype is a single-use device. Unlike using scissors as the access device, Hematype reduces the risk of sample cross-contamination, when used as intended.

Hematype works with plastic and glass vials with a diameter of 10 to 12 mm. This flexibility allows Hematype to be used with most commercially available vials.



Step 1	Step 2	Step 3
		
<ul style="list-style-type: none"><li>• Always use PPE when handling blood</li><li>• Place the vial in the rack</li><li>• Slide the Hematype Segment Device over the top of the vial</li></ul>	<ul style="list-style-type: none"><li>• Hold the Hematype between thumb and forefinger</li><li>• Grasp the top of the tube segment</li><li>• Insert the lower end of the tube segment into the Hematype</li></ul> <p>The needle in Hematype will pierce the tube segment</p> <ul style="list-style-type: none"><li>• Gently squeeze the tube segment to drain contents</li></ul>	<ul style="list-style-type: none"><li>• With the tube segment still in place, remove the Hematype from the vial</li><li>• Discard into biohazard waste receptacle according to facility SOP</li></ul>

For more information please contact [ProductSupport@fresenius-kabi.com](mailto:ProductSupport@fresenius-kabi.com) or call 800-333-6925.

Please refer to the Instructions for Use for a full list of warnings and precautions associated with the use of this device.

Copyright © 2020 Fresenius Kabi AG. All rights reserved.  
All trademarks referred to are property of their respective owners.