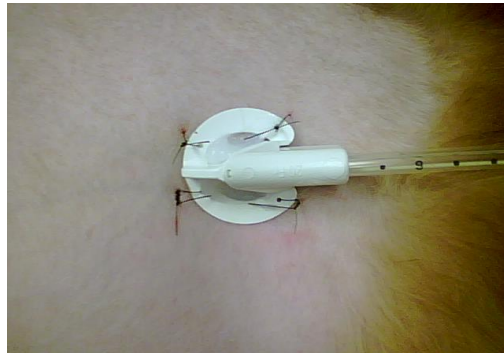


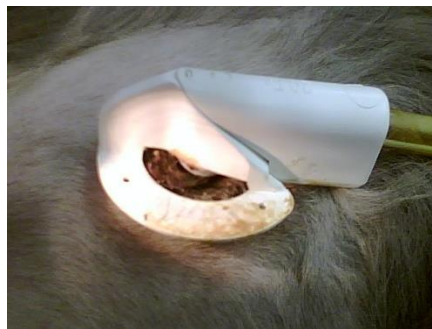
## PEG (Percutaneous Endoscopic Gastrostomy) Tube Care

Taking care of your pet's PEG tube is a very important step that can assist your pet's recovery. The PEG tube is a device that goes through your pet's skin, abdominal wall, and into the stomach. It is the passageway for you to feed your pet the nutrition he/she will need. Since it is a passageway into the body, it must be checked daily to ensure that it is in place and functioning properly.

You will need to look at the PEG tube insertion site daily. Check for redness, swelling, excessive discharge, or pain. It is normal for a thin rim of red or pink tissue to surround the insertion point. It is also normal to have a small amount of seepage around the tube. This seepage would be clear, or possibly slightly yellow/tan tinged. However, if there are excessive amounts of seepage, or this seepage turns a darker yellow or green color, or becomes foul smelling, notify us as soon as possible.



Clean around the PEG tube once daily with a soft cloth or gauze dampened with warm water. There is no need to use soap to clean the tube; warm water should do just fine. This should help remove any debris accumulation. After cleaning, if instructed, you may put a very light layer of triple antibiotic around the site. If the insertion site begins to accumulate a "crust", and you are cleaning once daily, you may need to clean it a second time each day. Allowing the tube to remain crusted over, or not cleaning the site may lead to infection.



Keep your pet from chewing, licking, scratching, or pulling the tube. If this occurs, an e-collar may need to be put on until the time when the tube can be removed. Here at Veterinary Specialty Center, we usually place a t-shirt on your pet. This t-shirt will somewhat protect the tube from being pulled, chewed, licked, or soiled. The diagram below shows how the tube is placed within this t-shirt. Keeping the tube tucked inside the shirt as shown will help prevent the tube from being damaged, keeping it up so it is difficult for it to be pulled. This is also more comfortable for your pet, as a dangling tube may pull at the sutures and may also frighten your pet.



The t-shirt, if soiled, can be washed by hand in gentle soap, and hung to dry. Please do not put in a washer/dryer, as it will be prematurely ruined. If additional shirts are needed, or any materials (i.e. feeding syringes, gauze for cleaning) please let us know, and we can give you more.

If any of the following occur, notify us as soon as possible so that we may determine the best way to assist you:

*The tube position has changed, or the tube is no longer secure or comes out. Sutures may come out and do not necessarily need to be replaced, however, call us if any of the sutures come out, so we may make a recommendation.*

*The insertion site or sutured skin is excessively irritated, swollen, painful, or infected.*

*There is a development of excessive, foul-smelling discharge.*

*The tube cracks or rips (or is chewed through), or its attachments become detached.*

*Your pet coughs, develops breathing problems, develops a fever, or becomes lethargic.*

*Your pet continues to vomit despite following recommendations on the PEG tube feeding instructions.*

*The tube clogs (even if you can clear it).*

If at any time you have questions, do not understand something, or need help with the PEG tube, please, give us a call at 847.459.7535 and ask to speak with or leave a message for an internal medicine technician.

---

Veterinary Specialty Center is guided by the belief that companion animals deserve state-of-the-art medical care in a kind and comforting environment. The courage of our patients, the loyalty of their human families, and the devotion of our referral veterinarians inspire our vision. It is sustained by the contributions of our compassionate, knowledgeable and dedicated staff and built upon a tradition of providing unsurpassed healthcare for animals.

---